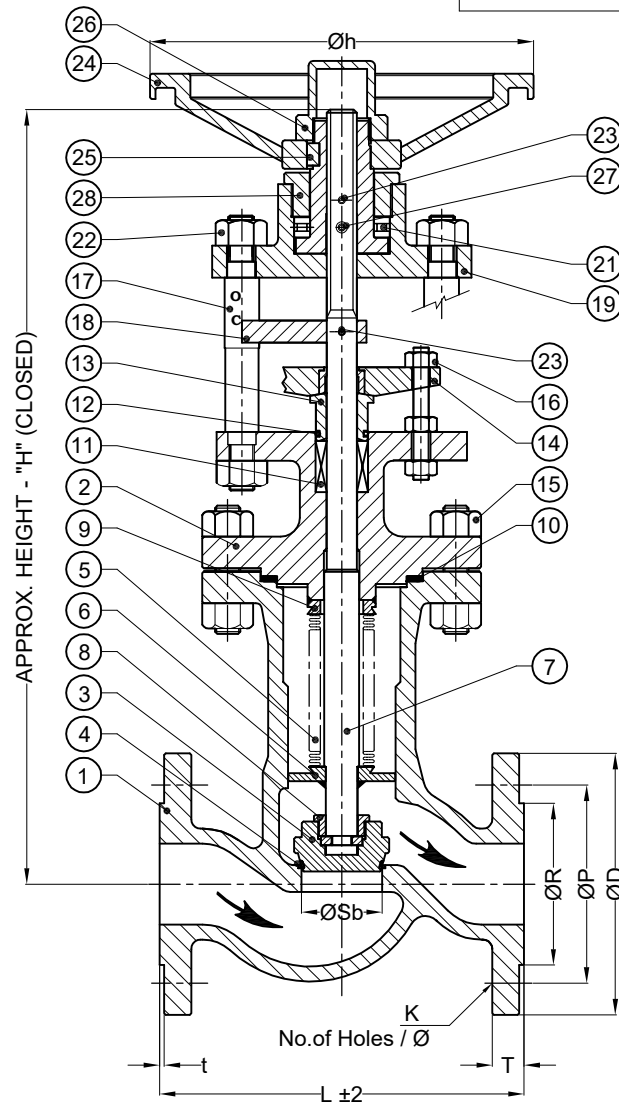


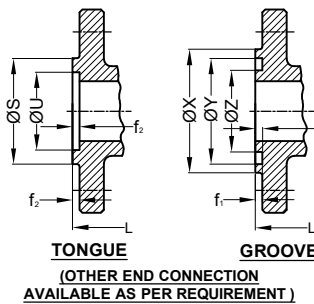
# MODEL : CBGL - EC



## DIMENSIONAL DETAILS:

DN	25	40	50	80	100	150
ØD	115	150	165	200	235	300
ØP	85	110	125	160	190	250
ØR	68	88	102	138	162	218
T	18	18	20	24	24	28
t	2	3	3	3	3	3
K	4/Ø14	4/Ø18	4/Ø18	8/Ø18	8/Ø22	8/Ø26
L	160	200	230	310	350	480
H	368	432	485	540	650	801
Øh	200	250	250	300	350	450
ØSb ±5%	25	40	50	80	100	150
Body & Bonnet Thickness	7	8	9	10.5	12	14.5

## OPTIONAL VALVE ENDS :

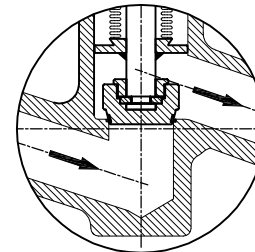


## TONGUE DIMENSIONAL DETAILS:

DN	25	40	50	80	100	150
ØS	57	75	87	120	149	203
ØU	43	61	73	106	129	183
f2	4.5	4.5	4.5	4.5	5.0	5.0

## GROOVE DIMENSIONAL DETAILS:

DN	25	40	50	80	100	150
ØX	68	88	102	138	162	218
ØY	58	76	88	121	150	204
ØZ	42	60	72	105	128	182
f1	2	3	3	3	3	3
f3	4	4	4	4	4.5	4.5



\* VALVE WITH FORGED CONSTRUCTION FOR SIZE ≤ DN50

**EURO CHLOR BELLOW SEAL GLOBE VALVE PN40**

REV	REV DATE	DETAILS	APPROVED BY
00	12-03-2022	FOR APPROVAL	HARISH P

28	YOKE NUT	ASTM - A 276 TYPE 304
27	GREASE NIPPLE	SS 304
26	HAND WHEEL NUT	SS 304
25	HAND WHEEL KEY	SS 304
24	HAND WHEEL	ASTM - A 216 Gr. WCB / SG IRON
23	GRUB SCREW	SS 304
22	PILLAR NUT	ASTM - A 194 Gr.7 / 7M
21	BEARING	THRUST BEARING
20	YOKE SLEEVE	ASTM - A 439 Gr.D2
19	YOKE	ASTM - A 352 Gr. LCC / LCB
18	GUIDE PLATE	ASTM - A 240 TYPE 304 / SS 304
17	PILLAR	ASTM - A 276 TYPE 304
16	GLAND STUD / NUT	ASTM - A 320 Gr.L7 / L7M / A 194 Gr.7 / 7M
15	FASTENER	ASTM - A 320 Gr.L7 / L7M / A 194 Gr.7 / 7M
14	GLAND FLANGE	ASTM - A 240 TYPE 304 / A 351 Gr.CF8 / ASTM - A 352 Gr. LCC/LCB
13	GLAND BUSH	ASTM - A 276 TYPE 316L / A 351 Gr.CF3M / A 276 TYPE 316 / A 351 Gr.CF8M / SS 316Ti
12	SEALING	VITON " O " RING
11	PACKING	VIRGIN PTFE
10	GASKET	SPW - SS 316L + PTFE / SS 316Ti + PTFE / MONEL + PTFE / HC276 + PTFE
9	TOP COLLAR	HASTELLOY C 276
8	STEM NUT	ASTM - A 276 TYPE 316L / SS 316Ti / MONEL / DUPLEX S31803 / HASTELLOY
7	STEM	ASTM - A 276 TYPE 316L / SS 316Ti / MONEL / DUPLEX S31803 / HASTELLOY
6	BELLOW COLLAR	HASTELLOY C 276
5	BELLOW	HASTELLOY C 276
4	INTEGRAL SEAT	ASTM - A 352 Gr. LCC / LCB / ASTM - A 350 Gr. LF2*+ STELLITED
3	PLUG	ASTM - A 350 Gr. LF2 / MONEL / HASTELLOY / A 351 Gr. CF3M / SS 316L / SS 316Ti / A 352 Gr. LCC / LCB / DUPLEX S31803 + STELLITED
2	BONNET	ASTM - A 352 Gr. LCC / LCB / ASTM - A 350 Gr. LF2*
1	BODY	ASTM - A 352 Gr. LCC / LCB / ASTM - A 350 Gr. LF2*

DRG NO.:

**BOS-S-23381 REV 00**

**RATING : PN40**



## NOTE:-

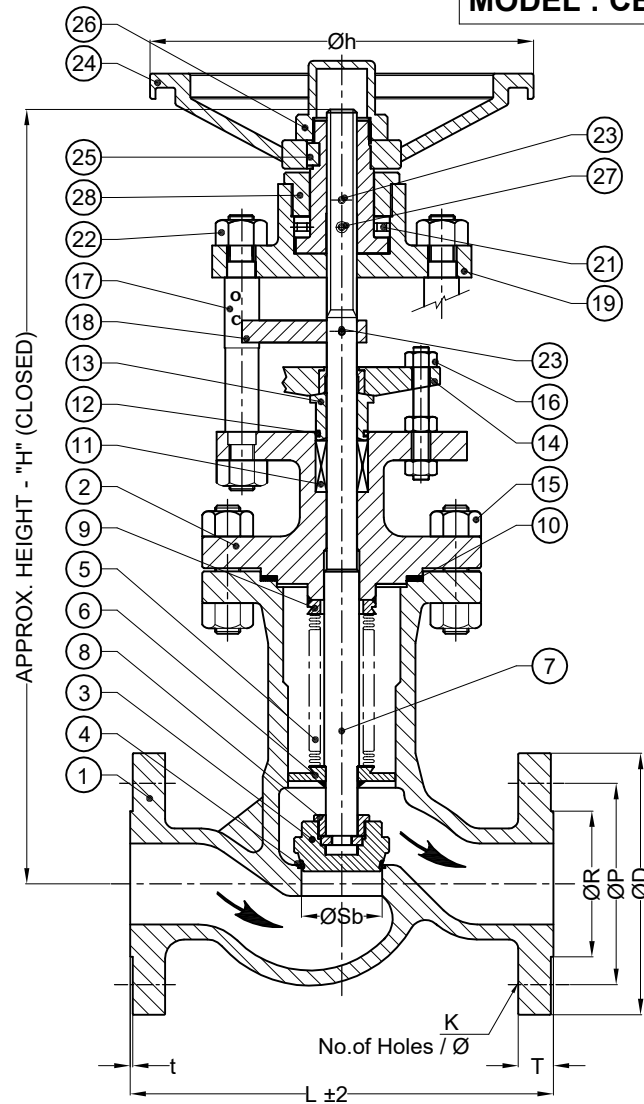
- VALVE DESIGNED AS PER EURO-CHLOR GEST 17 / 492.
- VALVE FACE TO FACE EN 558 (BASIC SERIES 1).
- FLANGED END TO EN1092-1 WITH RAISED FACE SERRATED FINISH.
- TESTING AS PER EN 12266-1 / GEST 17/492.
- INLET AND OUTLET FLANGES SECURELY BOLTED WITH BLANK FLANGES AND FITTED WITH SUITABLE GASKETS.
- OPTIONAL OTHER GRADES OF MATERIAL AVAILABLE (BASED ON PRESSURE, TEMPERATURE AND MEDIA) WHEN REQUESTED AS PER EURO CHLOR GEST 79/82 .
- DIFFERENT TYPE OF FLANGE FACING AVAILABLE AS PER REQUIREMENT.
- OPTIONAL OTHER RATING AND OTHER VALVE SIZE AVAILABLE AS PER CUSTOMER REQUIREMENT.
- DRAIN TAPPINGS IN THE BODY ARE NOT PERMITTED.
- PLUG SHALL BE STELLITED AS PER CUSTOMER REQUIREMENT.
- APPLICATION SHALL BE LIQUID CHLORINE & DRY GASEOUS CHLORINE.

APPD.	H.P.	HARISH P
DT.	12.03.2022	
CHKD.	H.P.	HARISH P
DT.	12.03.2022	
DRN.	H.P.	RAGHAVENDRA P
DT.	12.03.2022	

ALL DIMENSIONS ARE IN mm  
IF IN DOUBT. ASK...

SCALE  
N.T.S.

# MODEL : CBGL - EC



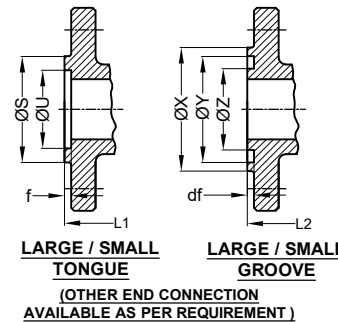
## NOTE:-

- VALVE DESIGNED AS PER EURO-CHLOR GEST 17 / 492.
- VALVE FACE TO FACE EN 558 - BASIC SERIES 21 / ASME B16.10.
- FLANGED END TO ASME B 16.5 WITH RAISED FACE SERRATED FINISH.
- TESTING AS PER EN 12266-1 / GEST 17/492.
- INLET AND OUTLET FLANGES SECURELY BOLTED WITH BLANK FLANGES AND FITTED WITH SUITABLE GASKETS.
- OPTIONAL OTHER GRADES OF MATERIAL AVAILABLE (BASED ON PRESSURE, TEMPERATURE AND MEDIA) WHEN REQUESTED AS PER EURO CHLOR GEST 79/82.
- DIFFERENT TYPE OF FLANGE FACING AVAILABLE AS PER REQUIREMENT.
- OPTIONAL OTHER RATING AND OTHER VALVE SIZE AVAILABLE AS PER CUSTOMER REQUIREMENT.
- DRAIN TAPPINGS IN THE BODY ARE NOT PERMITTED.
- PLUG SHALL BE STELLITED AS PER CUSTOMER REQUIREMENT.
- APPLICATION SHALL BE LIQUID CHLORINE & DRY GASEOUS CHLORINE.

LARGE GROOVE DIMENSIONAL DETAILS						
DN	25	40	50	80	100	150
ØX	62	84	103	138	168	227
ØY	52.4	74.6	93.7	128.6	158.8	217.5
ØZ	36.5	52.4	71.4	106.4	130.2	188.9
L2	213	239	277	328	366	454
df	5	5	5	5	5	5

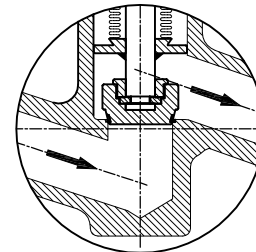
LARGE TONGUE DIMENSIONAL DETAILS						
ØS	50.8	73	92.1	127	157.2	215.9
ØU	38.1	54	73	108	131.8	190.5
L1	216	242	280	331	369	457
f	7	7	7	7	7	7

## OPTIONAL VALVE ENDS :



## DIMENSIONAL DETAILS:

DN	25	40	50	80	100	150
ØD	125	155	165	210	255	320
ØP	88.9	114.3	127	168.3	200	269.9
ØR	50.8	73	92.1	127	157.2	215.9
T	17.9	21.1	22.7	29	32.2	37.0
t	2	2	2	2	2	2
K	4/Ø19	4/Ø22	8/Ø19	8/Ø22	8/Ø22	12/Ø22
L	203	229	267	318	356	444
H	370	435	490	540	650	803
Øh	200	250	250	300	350	450
ØSb ±5%	25	40	50	80	100	150
Body & Bonnet Thickness	6.3	7.9	9.5	11.9	12.7	15.9



\* VALVE WITH FORGED  
CONSTRUCTION FOR SIZE ≤ DN50

**EURO CHLOR BELLOW  
SEAL GLOBE VALVE ANSI 300#**

REV	REV DATE	DETAILS	APPROVED BY
00	12-03-2022	FOR APPROVAL	HARISH P

SMALL GROOVE DIMENSIONAL DETAILS						
ØX	57	73	92	127	157	216
ØY	49.2	65.1	84.1	119.1	146	204.8
ØZ	36.5	52.4	71.4	106.4	130.2	188.9
L2	213	239	277	328	366	454
df	5	5	5	5	5	5

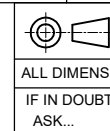
SMALL TONGUE DIMENSIONAL DETAILS						
ØS	47.8	63.5	82.6	117.5	144.5	203.2
ØU	38.1	54	73	108	131.8	190.5
L1	216	242	280	331	369	457
f	7	7	7	7	7	7

28	YOKE NUT	ASTM - A 276 TYPE 304
27	GREASE NIPPLE	SS 304
26	HAND WHEEL NUT	SS 304
25	HAND WHEEL KEY	SS 304
24	HAND WHEEL	ASTM - A 216 Gr. WCB / SG IRON
23	GRUB SCREW	SS 304
22	PILLAR NUT	ASTM - A 194 Gr.7 / 7M
21	BEARING	THRUST BEARING
20	YOKE SLEEVE	ASTM - A 439 Gr.D2
19	YOKE	ASTM - A 352 Gr. LCC / LCB
18	GUIDE PLATE	ASTM - A 240 TYPE 304 / SS 304
17	PILLAR	ASTM - A 276 TYPE 304
16	GLAND STUD / NUT	ASTM - A 320 Gr.L7 / L7M / A 194 Gr.7 / 7M
15	FASTENER	ASTM - A 320 Gr.L7 / L7M / A 194 Gr.7 / 7M
14	GLAND FLANGE	ASTM - A 240 TYPE 304 / A 351 Gr.CF8 / ASTM - A 352 Gr. LCC / LCB
13	GLAND BUSH	ASTM - A 276 TYPE 316L / A 351 Gr.CF3M / A 276 TYPE 316 / A 351 Gr.CF8M / SS 316Ti
12	SEALING	VITON " O " RING
11	PACKING	VIRGIN PTFE
10	GASKET	SPW - SS 316L + PTFE / SS 316Ti + PTFE / MONEL + PTFE / HC276 + PTFE
9	TOP COLLAR	HASTELLOY C 276
8	STEM NUT	ASTM - A 276 TYPE 316L / SS 316Ti / MONEL / DUPLEX S31803 / HASTELLOY
7	STEM	ASTM - A 276 TYPE 316L / SS 316Ti / MONEL / DUPLEX S31803 / HASTELLOY
6	BELLOW COLLAR	HASTELLOY C 276
5	BELLOW	HASTELLOY C 276
4	INTEGRAL SEAT	ASTM - A 352 Gr. LCC / LCB / ASTM - A 350 Gr. LF2* + STELLITED
3	PLUG	ASTM - A 350 Gr. LF2 / MONEL / HASTELLOY / A 351 Gr. CF3M / SS 316L / SS 316Ti / A 352 Gr. LCC / LCB / DUPLEX S31803 + STELLITED
2	BONNET	ASTM - A 352 Gr. LCC / LCB / ASTM - A 350 Gr. LF2*
1	BODY	ASTM - A 352 Gr. LCC / LCB / ASTM - A 350 Gr. LF2*

**Sr.No. PARTS MATERIAL OF CONSTRUCTION**

**DRG NO.: BOS-S-23380 REV 00**

APPD.	H.P.	HARISH P
DT.		12.03.2022
CHKD.	H.P.	HARISH P
DT.		12.03.2022
DRN.	H.P.	RAGHAVENDRA P
DT.		12.03.2022



ALL DIMENSIONS ARE IN mm  
IF IN DOUBT.  
ASK...

SCALE  
N.T.S.