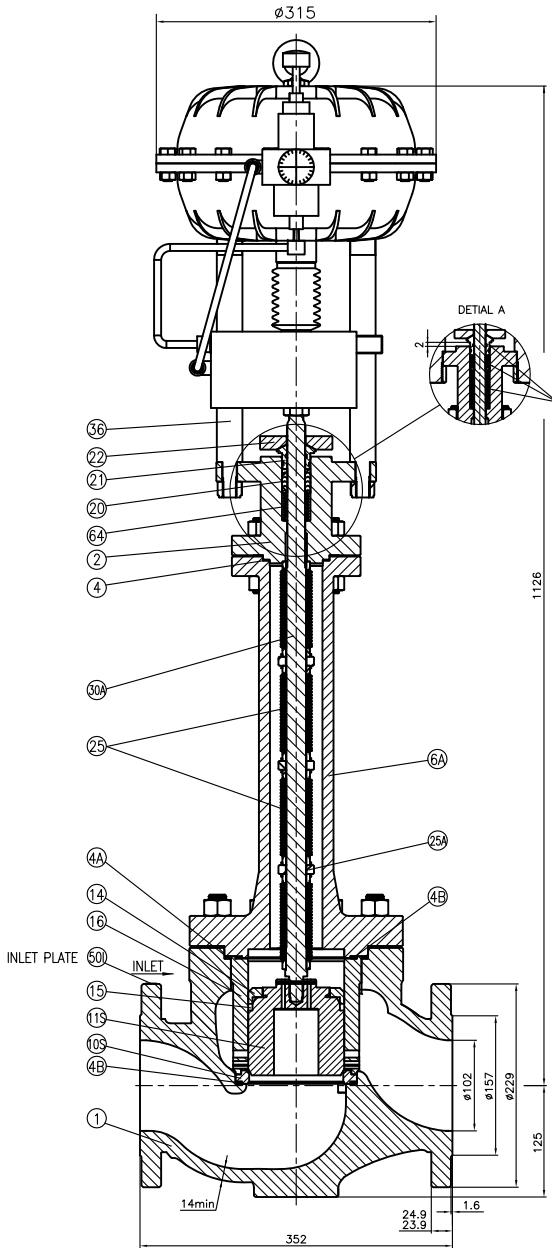
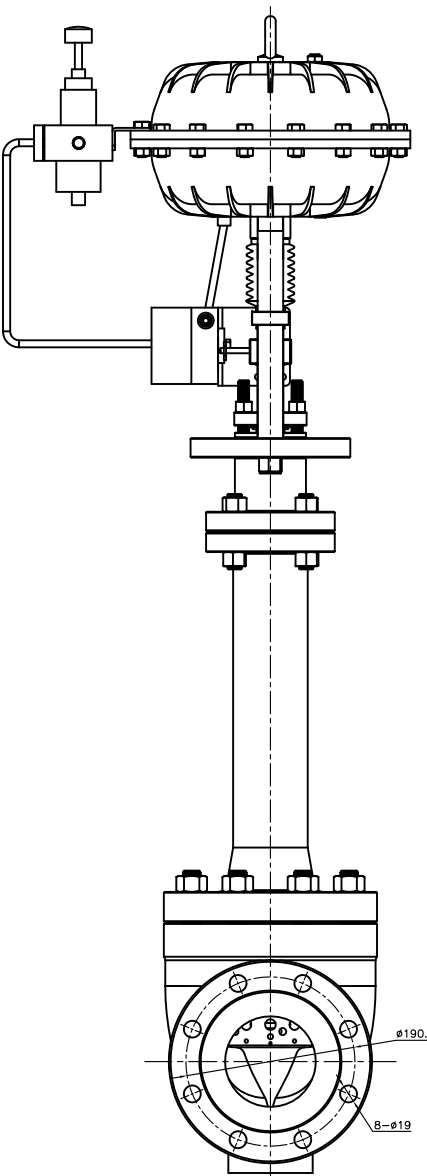
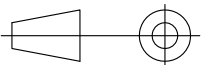


HMV Work Order	HMV_PO#20191100/05
Tag No.	PV-005
End Connection	Flanged ASME B16.5 CL150 RF
Electrical Connection	M20X1.5
Pneumatic Connection	1/4" NPT
Apprx Weight	113 kg

1st ANGLE
PROJECTION



ITEM NO.	DESCRIPTION	QTY.	MATERIAL
1	BODY	1	ASTM A352 LCC
2	BONNET	1	ASTM A350 LF2
4	BONNET/CONNECTOR GASKET	1	GYLON 3510
4A	BODY/CONNECTOR GASKET	1	MONEL/GRAPHITE
4B	SEAT/INNER SLEEVE GASKET	2	MONEL/GRAPHITE
6A	BODY/BONNET CONNECTOR	1	ASTM A350 LF2
10S	SEAT	1	316Ti (1.4571)+STELLITE 6
11S	PLUG	1	316Ti (1.4571)+STELLITE 6
14	PLUG LOCK RING	1	316Ti (1.4571)
15	BALANCE RING	1	ELGILOY
16	SLEEVE	1	316Ti (1.4571)+Cr HF
20	PACKING SET	1	PURE PTFE
21	GLAND FOLLOWER	1	316 SS
22	GLAND PLATE	1	316 SS
25	BELLOWS	4	UNS N10276(2.4819)
25A	BELLOWS CONNECTOR RING	3	UNS N06022
30A	STEM	1	UNS N06022
36	ACTUATOR MOUNTING PILLAR	2	UNS S31803
50I	INLET PLATE	1	316 SS
64	PACKING SPRING	1	316 SS
	OUTER O RING	1	EPDM
	INNER O RING	1	EPDM
	PLUG PIN	1	316 SS
	BODY/CONNECTOR STUDS	8	A320 L7M XYLAN 1424
	BODY/CONNECTOR NUTS	8	A320 L7M XYLAN 1424
	BONNET/CONNECTOR STUD BOLTS	4	A320 L7M XYLAN 1424
	BONNET/CONNECTOR NUTS	4	A320 L7M XYLAN 1424
	STEM NUTS	1	A320 L7M XYLAN 1424
	GLAND STUDS	2	A320 L7M XYLAN 1424
	GLAND NUTS	2	A320 L7M XYLAN 1424
	ACTUATOR PILLAR NUTS	2	CS AISI 1035 NYLOCK
	ACTUATOR	1	Pneumatic
	POSITIONER	1	Electro-Pneumatic
	AIR FILTER REGULATOR	1	Standard

Actuator HM530-FC	40 mm stroke
Flow direction	Under the plug
Minimum Wall thickness	14 mm

- Notes:
- Pressure envelope design and testing in accordance with Euro Chlor GEST 17/492
Globe Valves Bellow Sealed for Use on Liquid Chlorine. Seat leakage testing in accordance with FCI-70-2. See Data Sheet for allowable leakage rate.
 - Applicable Inspection and Test plan ITP HMV5801 EC (LCC)_20191100CV.
 - For details of actuator, positioner and auxiliary items refer to Data Sheet.
 - Valve body minimum wall thickness in accordance with GEST 17/492 (API 600).
 - Fitted with stainless steel Tag "CLEANED FOR CHLORINE SERVICE".
 - In an emergency the auxiliary gland can be tightened as shown in the detail A until the spring is fully compressed. Further tightening of the gland nuts will compress the chevron rings reducing any leakage from the gland but possibly affecting the smooth operation of the valve.

MAX INTERNAL RADII 0.5 EXCEPT AS STATED MACHINING TOLERANCES UNLESS OTHERWISE STATED				DO NOT SCALE DRAWING. ALL DIMENSIONS IN MILLIMETRES(mm)/ UNLESS OTHERWISE STATED. REMOVE ALL BURRS AND SHARP EDGES. FOR EXPLANATION OF NOTES, SYMBOLS ETC, SEE BS 308.				VALVE CODE 5801 SERIES																							
<table><tr><td>tø3</td><td>tø6</td><td>6 to10</td><td>10 to18</td><td>18 to30</td><td>30 to50</td><td>50 to80</td></tr><tr><td>±0.07</td><td>±0.09</td><td>±0.11</td><td>±0.14</td><td>±0.17</td><td>±0.20</td><td>±0.23</td></tr></table>				tø3	tø6	6 to10	10 to18	18 to30	30 to50	50 to80	±0.07	±0.09	±0.11	±0.14	±0.17	±0.20	±0.23					TITLE Typical G.A.:DN100(4") CAST STEEL BELLOWS SEAL CONTROL VALVE FOR USE ON CHLORINE FLANGED CL150 RF									
tø3	tø6	6 to10	10 to18	18 to30	30 to50	50 to80																									
±0.07	±0.09	±0.11	±0.14	±0.17	±0.20	±0.23																									
<table><tr><td>80 to120</td><td>120 to160</td><td>160 to250</td><td>250 to315</td><td>315 to400</td><td>400 to500</td><td>500 to630</td></tr><tr><td>±0.27</td><td>±0.32</td><td>±0.36</td><td>±0.41</td><td>±0.45</td><td>±0.49</td><td>±0.55</td></tr></table>				80 to120	120 to160	160 to250	250 to315	315 to400	400 to500	500 to630	±0.27	±0.32	±0.36	±0.41	±0.45	±0.49	±0.55	<table><tr><td>DRAWN</td><td>DATE</td><td>APPROVED</td><td>SCALE</td></tr><tr><td><i>LiwBo</i></td><td>2021.02.08</td><td><i>Ludovic</i></td><td>1:2</td></tr></table>				DRAWN	DATE	APPROVED	SCALE	<i>LiwBo</i>	2021.02.08	<i>Ludovic</i>	1:2	DRG. No. DN100_5801_CL150RF_V106E_40_20191100_05 REV 0	
80 to120	120 to160	160 to250	250 to315	315 to400	400 to500	500 to630																									
±0.27	±0.32	±0.36	±0.41	±0.45	±0.49	±0.55																									
DRAWN	DATE	APPROVED	SCALE																												
<i>LiwBo</i>	2021.02.08	<i>Ludovic</i>	1:2																												
<div><div>SURFACE ROUGHNESS</div><div><div>✓ EXCEPT WHERE OTHERWISE STATED</div></div></div>				HUNT & MITTON VALVE COMPANY																											
AS PRODUCED BY COMMON PRODUCTION PROCESSES																															
<div><div> ROUGH TURN</div><div> FINE TURNING</div></div>																															
<div><div> TURNING OR MILLING</div></div>																															